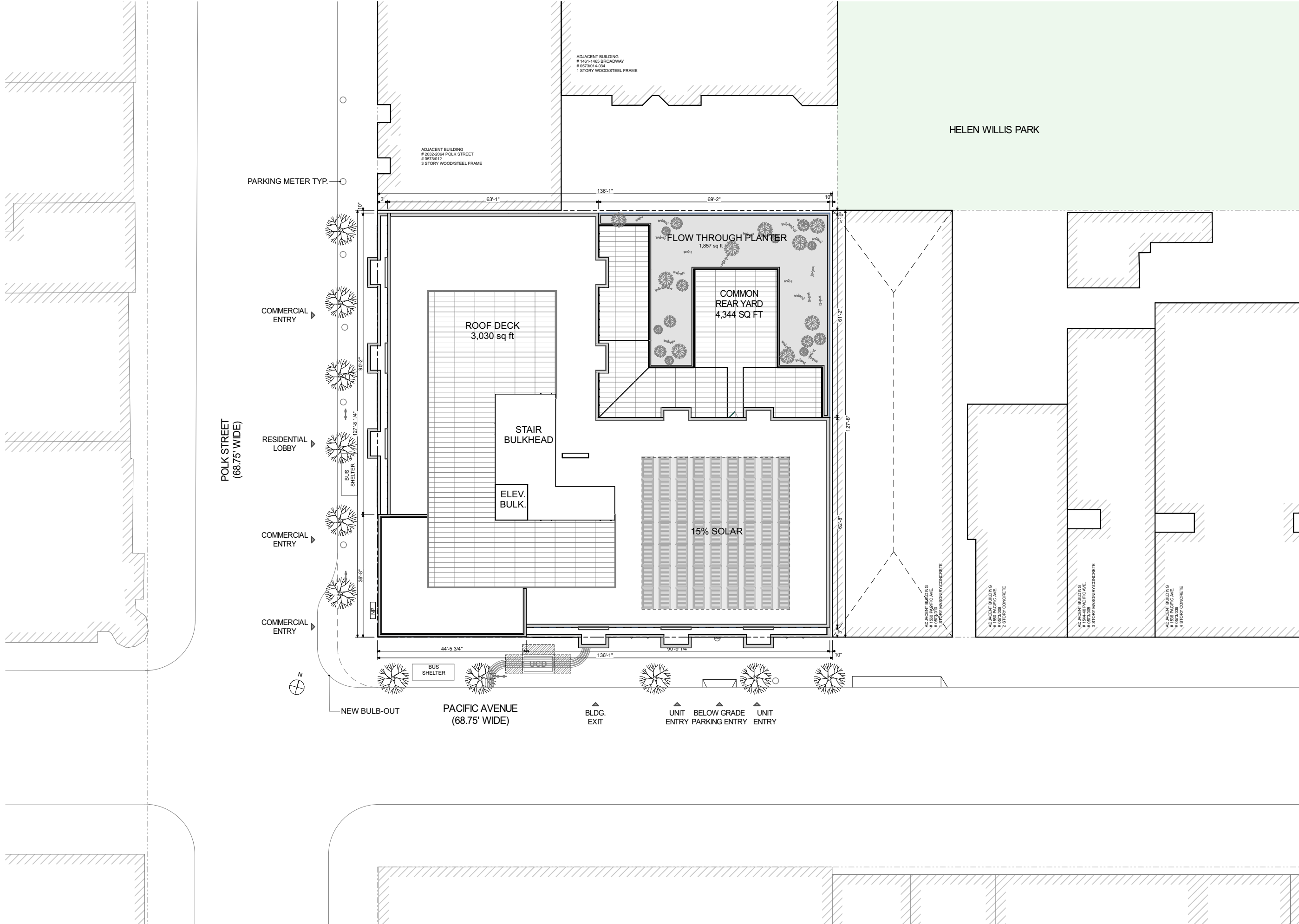


1 5 8 0 P A C I F I C A V E N U E
C O M M I S S I O N H E A R I N G

1580 PACIFIC AVENUE





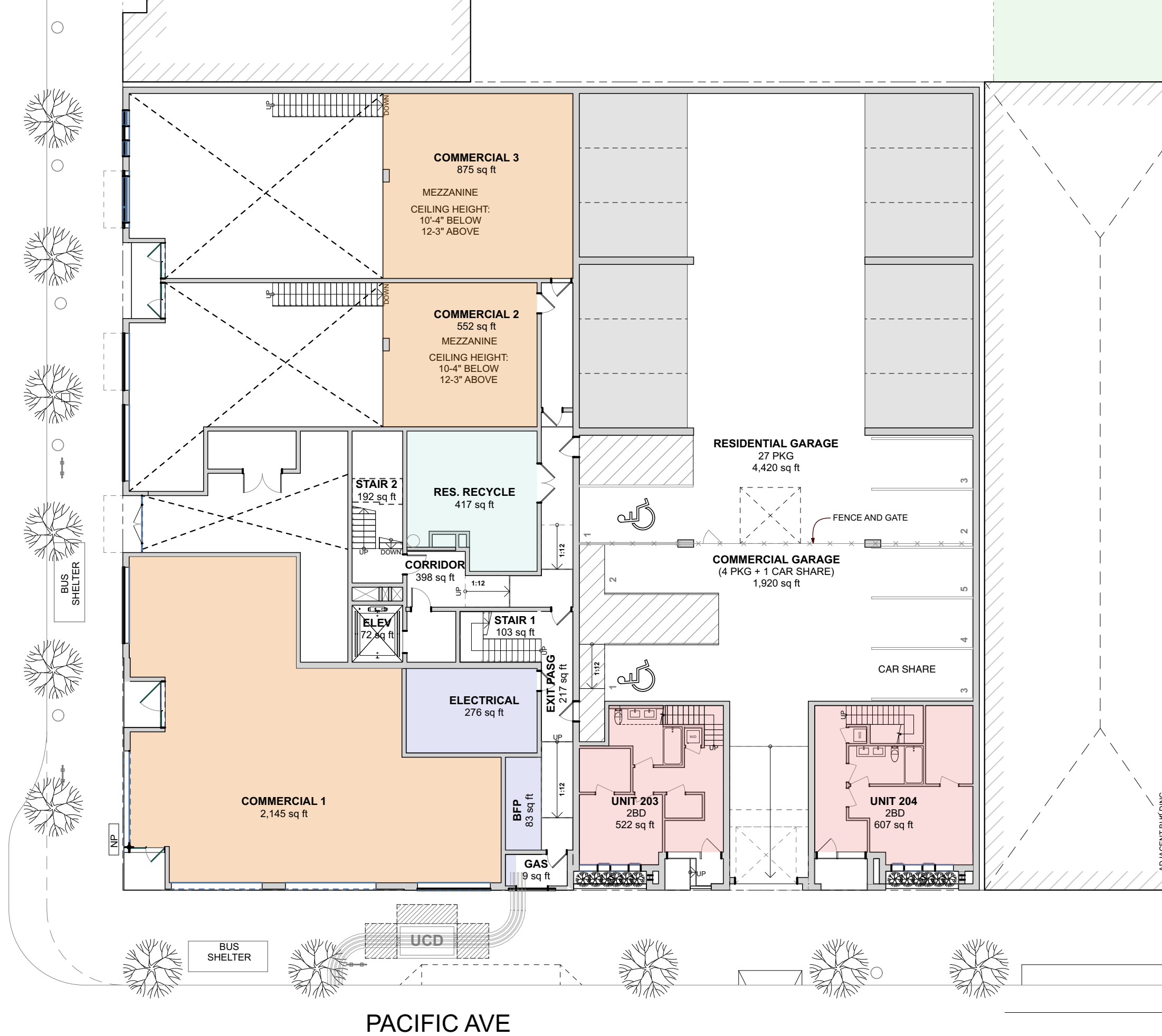
- LOBBY
- COMMERCIAL
- STORAGE



ADJACENT BUILDING
 # 1560 PACIFIC AVE.
 # 0573/010
 1 STORIES
 +/-

BASEMENT ①

POLK STREET



- 2 BEDROOM
- COMMERCIAL
- UTILITY

BUS SHELTER

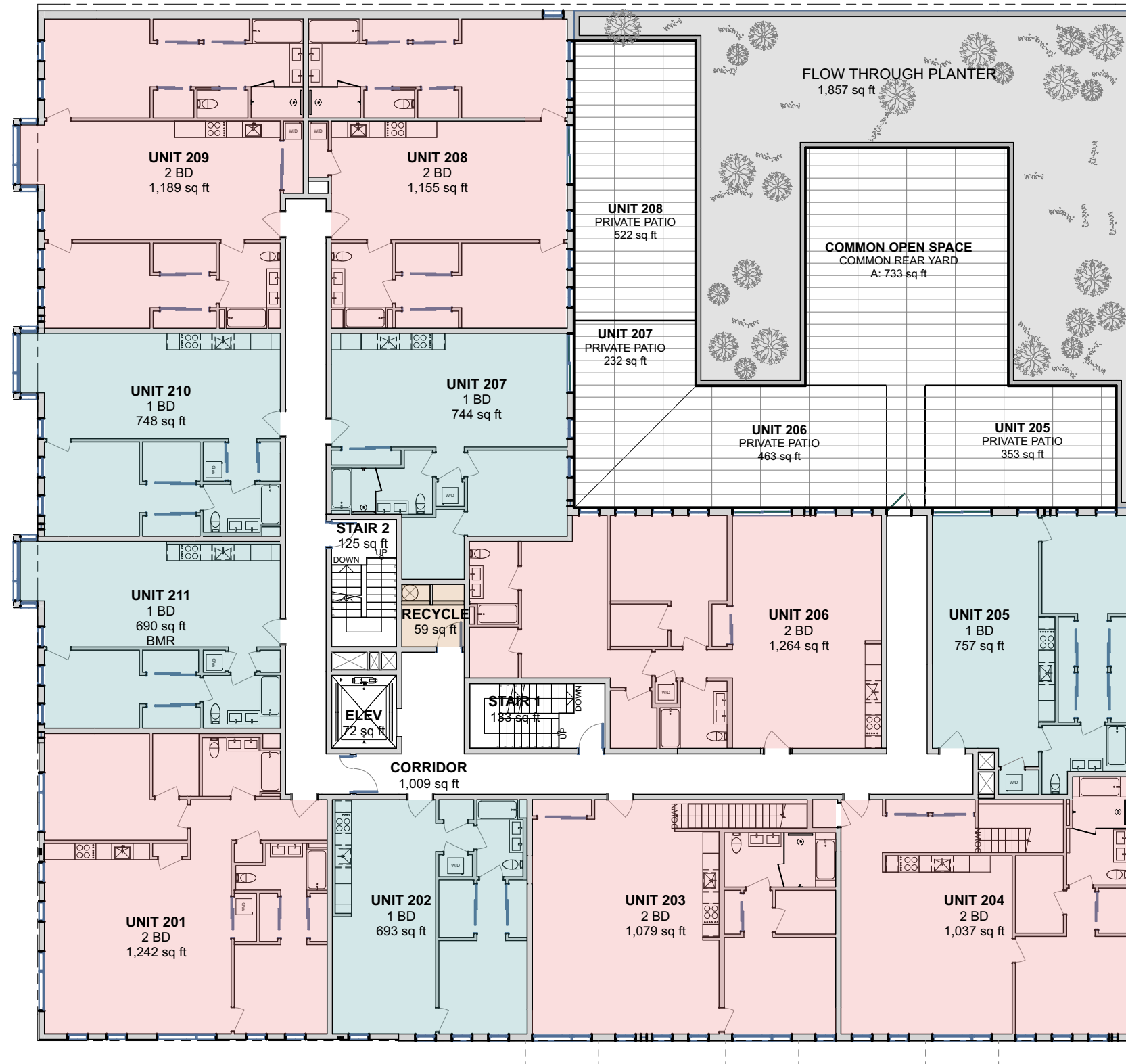
UCD

PACIFIC AVE

STORY 1 ①

- 2 BEDROOM
- 1 BEDROOM

POLK STREET

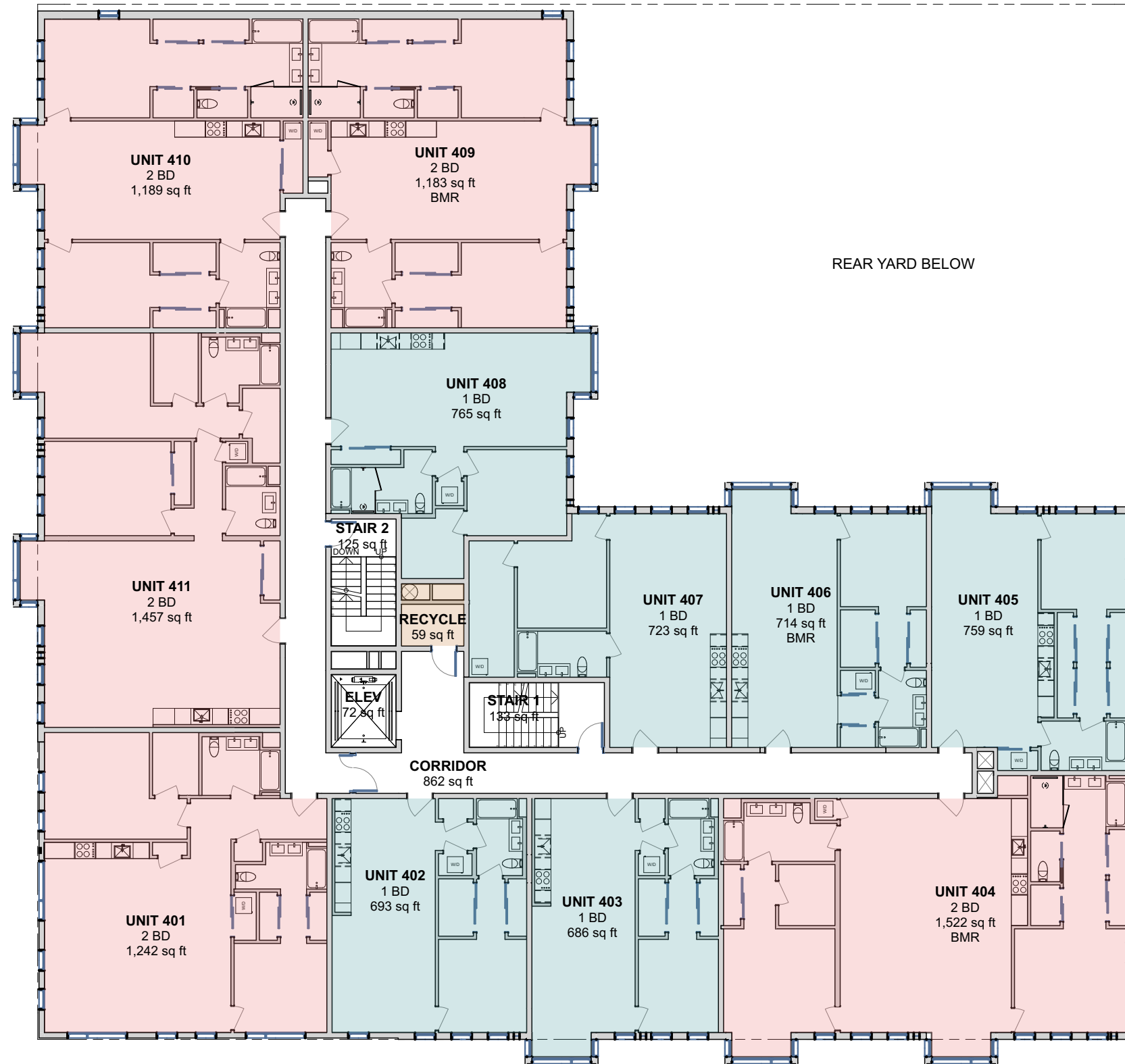


PACIFIC AVE

STORY 2 ①

- 2 BEDROOM
- 1 BEDROOM

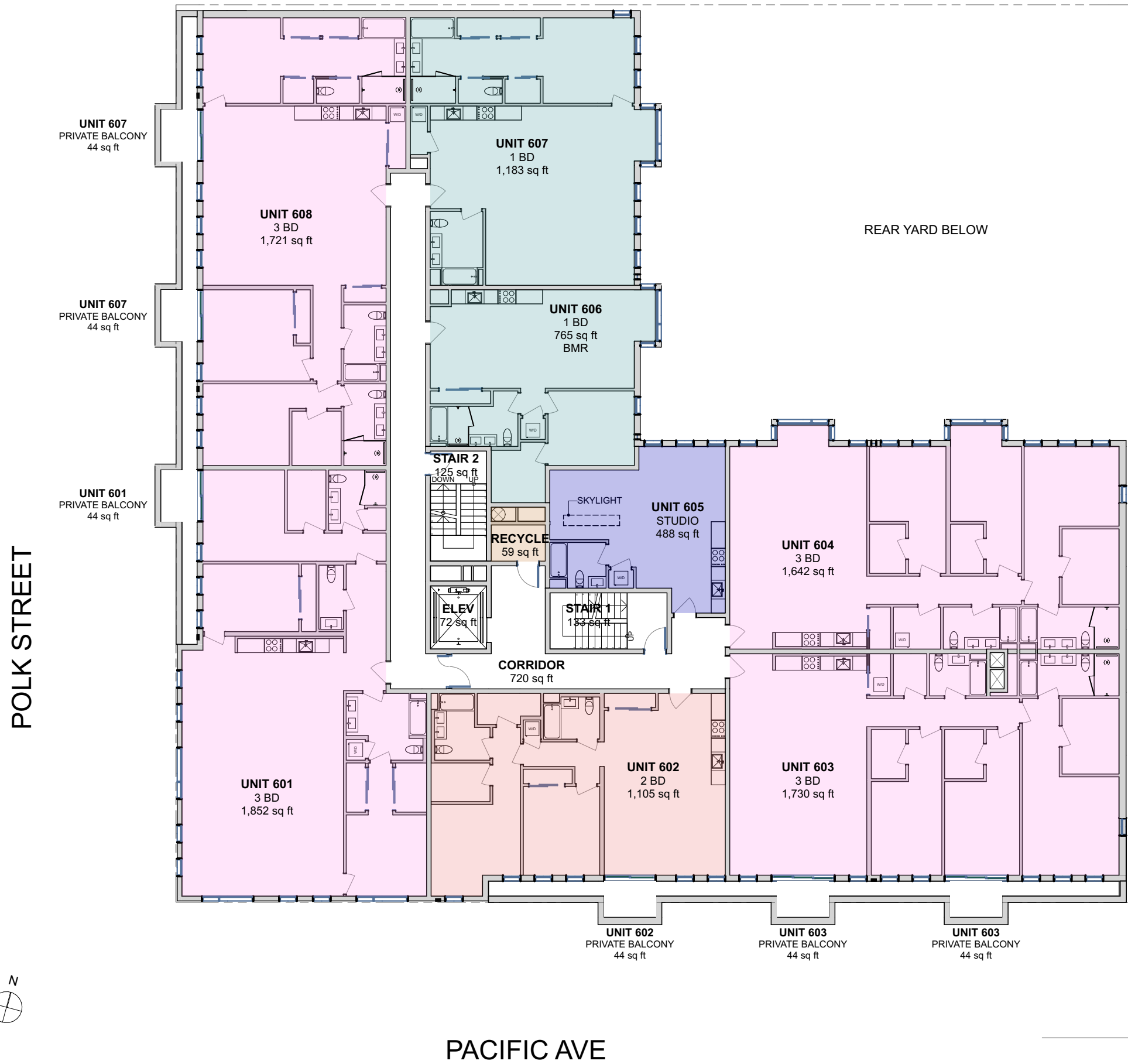
POLK STREET



PACIFIC AVE

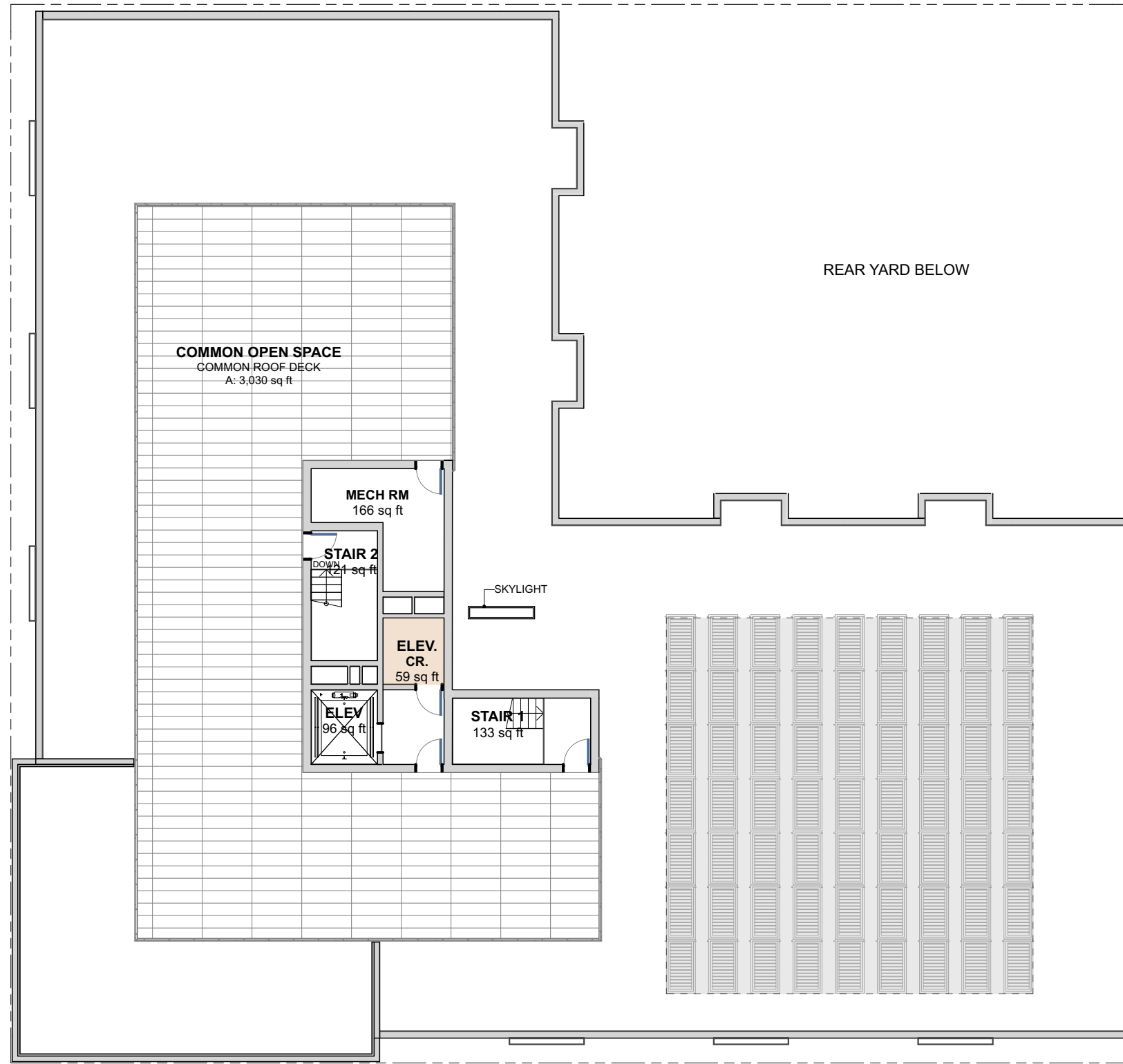
TYPICAL STORY 3-5 ①

- STUDIO
- 1 BEDROOM
- 2 BEDROOM
- 3 BEDROOM



STORY 6 ①

POLK STREET

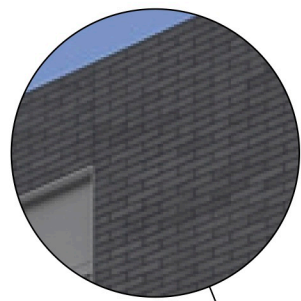


PACIFIC AVE

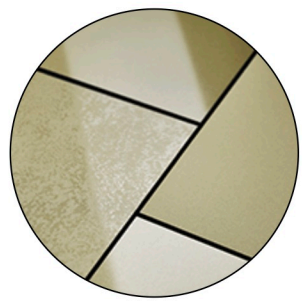
ROOF 1



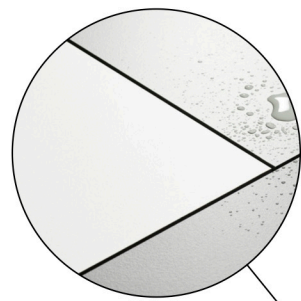
05



03



02B



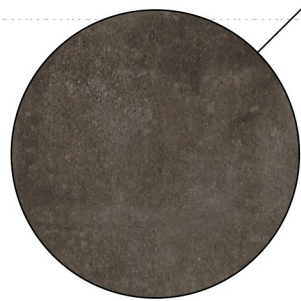
02A



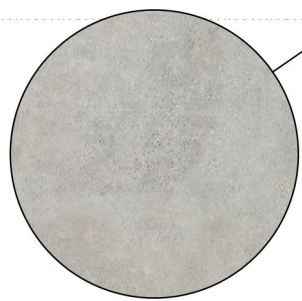
01

ID	DESCRIPTION
01	GLASS & PAINTED STEEL STOREFRONT SYSTEM
02	PHENOLIC RAINSCREEN PANEL, (02A)WHITE (02B)BRONZE
03	THIN BRICK VENEER
04	ANODIZED ALUM. FRAME WINDOWS & DOORS
05	FIBER CEMENT LAP SIDING, PAINTED
06	PAINTED METAL TRIM TO MATCH ADJACENT PANEL
07	42"H GUARDRAIL
08	LARGE FORMAT THROUGH-BODY TILE, CHARCOAL
09	LARGE FORMAT THROUGH-BODY TILE, WHITE
10	LARGE FORMAT THROUGH-BODY TILE, BRONZE
11	PAINTED STEEL CASING

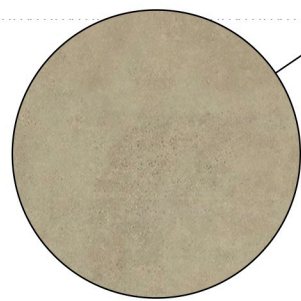
HEIGHT LIMIT ———



08



09



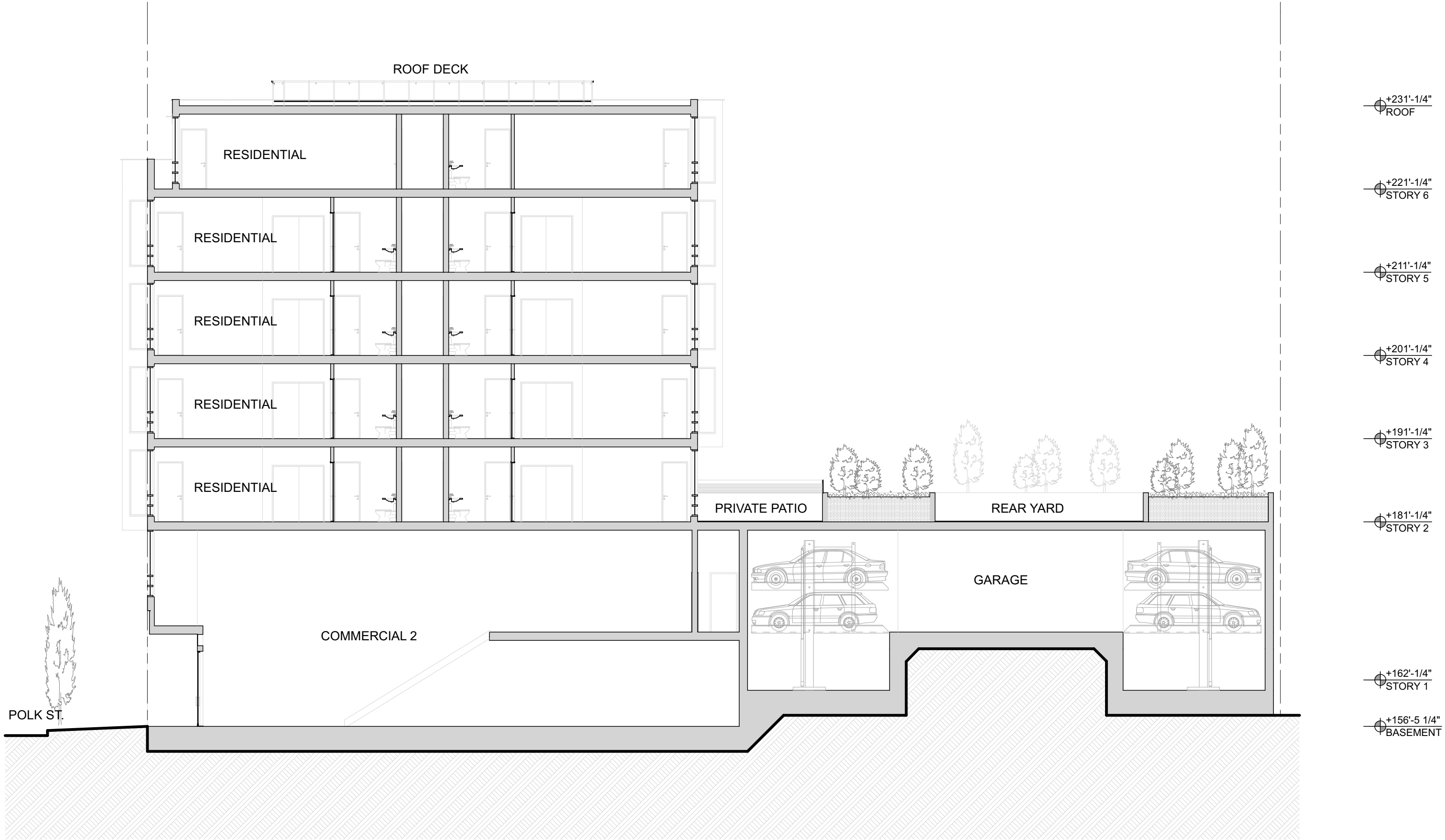
10

POLK STREET 1



PACIFIC AVENUE

1



SECTION EAST TO WEST ①





